



Bus Sales Team

Randy Johnson (Northern MN)
C: 612.850.5839
E: randyjohnson@hoglundbus.com

Doug Erdmann (Metro MN)
C: 612.756.3335
E: dougerdmann@hoglundbus.com

Kevin Schmidt (Southern MN)
C: 612.819.6017
E: kevinschmidt@hoglundbus.com

Chris Sexton (Used Inventory Manager)
D: 763.271.2974
E: chris.sexton@hoglundbus.com

Parts Sales Team

Jim Lanz
C: 763.213.3531
E: jimlanz@hoglundbus.com

Greg Weitzel
C: 612.812.9421
E: gregweitzel@hoglundbus.com

Mick Maher
C: 612.756.0990
E: mick.maher@hoglundbus.com

DIRECT LINES:

Sales: 800.866.3105
Parts: 800.866.3104
Service: 763.271.2999
Tech Line: 763.271.2982
Warranty: 763.271.2978



www.hoglundbus.com

DECEMBER 2017

— School Bus Flyer —



Beginning January 2018, Hoglund Bus Co. will be going digital. We will be emailing our School Bus Flyer monthly and printing quarterly. If you have not signed up for our e-newsletter yet, email Melissa at marketing@hoglundbus.com to be added. We will still have the same informative content plus more industry news.

TRADE SHOWS

1/11 - 1/12 - MSBA, Minneapolis Convention Center, Bus Booth A

1/26 - 1/27 - MSBOA, Rivers Edge Convention Center

4/7 - 4/8 - NSBA, San Antonio, TX

USED BUS SPOTLIGHT



File: 22487A Odometer: 50,707
Year: 2014 Engine: MXDT/230
Make: IC-CE Fuel: Diesel
Pass: 77 Brake: Hydraulic

\$56,000.00

OnCommand™ Connection is the industry's first and only open architecture remote diagnostic system for fleets of all makes and models of vehicles. Use OnCommand™ Connection to proactively identify potential problems, improve vehicle uptime, control maintenance and lower repair costs.

Features & Benefits

- Reduce** en-route events by proactively scheduling maintenance and repair
- Map** tools that plot truck locations, nearest dealers, hotels and local towing providers
- Generate** real-time comprehensive vehicle health reports
- Understand** fault codes quickly and easily with descriptions in plain English
- Gain** more insight with fault code action plans that provide severity information & recommend solutions



We will be closed
Monday, December 25th
and Monday January 1st

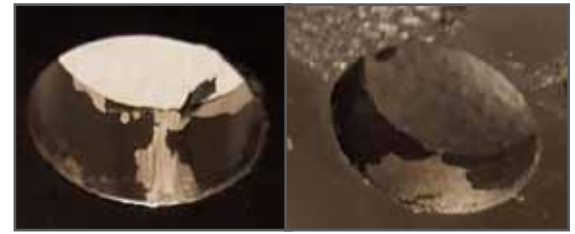
*From our family to yours, we
wish you Happy Holidays
and Happy New Year*

IC Bus Service Brake Switch Inspection

Source: iKNow article IK 0400155

Applies To: 2017 IC Bus with Hydraulic Brakes**Customer Concerns:** Brake lights not functioning or parking brake not releasing.**Diagnostic Steps:** To prevent unexpected movement of the vehicle and possible serious personal injury or death, park the vehicle on a flat, level surface, set the parking brake, turn the engine off and chock the wheels to prevent vehicle from moving in both directions.

1. Procedure can be performed with pedal assembly installed. **NOTE:** Make certain brake pedal is supported during reaming process.
2. Inspect brake switch clevis pin hole for debris/burrs/paint. See images below:



3. Using a reaming tool, remove any paint, burrs, or debris from clevis pin hole. Target Hole Diameter is 14.0-14.1 mm
4. Insert clevis pin into brake pedal assembly and ensure the clevis pin rotates freely in clevis pin hole. If pin does not rotate freely, more filing may be needed.
5. Inspect clevis pin for damage, if damaged then replace with new pin. If no damage is found on pin, reinstall brake pedal assembly into vehicle.
6. Verify repairs by rechecking for customer complaint.

EZ-Tech Navistar Launcher – Software Sunset / Launch of HeRo (Health Report) Software

Source: iKNow article IK 2700113

Navistar is proud to release HeRo (Health Report) Software which covers all International®, IC Bus™ and All Makes vehicles. Effective December 4, 2017, Navistar will be discontinuing the distribution and support of the Navistar EZ-Tech Launcher Health Report software. HeRo is the direct replacement for the Navistar EZ-Tech Launcher Health Report software.

Navistar is committed to working with you to make your transition a positive experience. As such, the following information highlights the various options that are available to you in this program.

OVERVIEW

With its advanced capabilities, HeRo (Health Report software) collects vehicle information, Diagnostic Troubleshooting Codes (DTCs) and other vital data points from the vehicle communication network. This network is made up of modules like the J1939 Modules, Engine Control Module, Aftertreatment Control Module, Body Control Module, Brake Control Module and the Transmission Control Module.

HeRo collects all this data and compiles it into a vehicle health report, which can be displayed from within the application.

In addition, HeRo also posts these health reports to OnCommand Connection* and the Navistar Service Portal, which add additional information such as open campaigns on the vehicle and fault code action plans.

* OnCommand Connection access included with the purchase of HeRo.

** Navistar Service Portal sold separately for customers.

DEALER AND ONCOMMAND™ EZ-TECH®

Dealers with EZ-Tech® computers (and customers with OnCommand™ EZ-Techs) will continue to receive support (5 years from date the EZ-Tech is shipped to the dealer / customer) and will automatically transition into the new software.

NOTE: Download the HeRo installation package from the EZ-Tech® download center on the Service Portal.

PURCHASING HeRo SOFTWARE

Please visit the Software section of the Navistar Tools Catalog. HeRo will be distributed with a perpetual license (no annual renewal fee)



TECH SUPPORT: We invite you to contact our tech help-line with any technical or training questions.

Doug Yager:

D: 763.271.2982 • C: 763.350.2597

E: service@hoglundbus.com

WARRANTY SUPPORT: We invite you to contact our warranty dept. with any questions you might have.

Eric Farber:

D: 763.271.22978 E: eric.farber@hoglundbus.com

SALES

800.866.3105

Financing & Leasing Available

NEW BUS INVENTORY

PASS	YEAR	SPEC	MAKE	ENGINE	BRK
14	2017	1743	Ford/Collins	Ford	H
14	2017	1753	Ford/Collins	3.7G	H
16+1	2017	1742	Chev/Collins	Chev	H
18+1	2018	1815	Chev/Collins	Chev	H
22	2017	1745	Ford/Collins	Ford	H
24+0	2018	1814	Chev/Collins	Chev	H
30	2017	1761	Chev/Collins	Chev	H
34	2017	1760	Chev/Collins	Chev	H
35+1	2017	1721	IC - CE	ISB/220	A
65	2018	1855	IC - CE	ISB/240	H
71	2017	1715	IC - CE	ISB/240	A
77	2018	1806	IC - CE	Propane/270	A
77	2018	1808	IC - CE	ISB/240	H
77	2018	1809	IC - CE	ISB/240	A
77	2018	1810	IC - CE	ISB/240	H
77	2018	1811	IC - CE	ISB/240	H
77	2018	1819	IC - CE	ISB/240	A
77	2018	1854	IC - CE	ISB/240	H
77	2017	1717	IC - CE	ISB/240	A
77	2017	1732	IC - CE	ISB/240	A
77	2017	1736	IC - CE	ISB/240	A
77	2017	1758	IC - CE	ISB/240	A
77/71	2016	1646	IC - CE	ISB/240	A
77L	2018	1818	IC - CE	B6.7/220	H

* Note: To view full list of inventory, visit www.hoglundbus.com

USED BUS INVENTORY

PASS	YEAR	MAKE	ENGINE	BRK	ODO
Large Conventional Buses 65 to 77 Passenger					
65	2015	IC	ISB/220	H	46,212
65	2014	IC	MX7/240	H	40,393
65	2005	Frtl	Merc/210	H	98,984
71	2013	IC	MX7/220	H	83,436
71	2005	IC	VT365/215	H	160,352
72	2011	IC	MXDT/225	H	98,046
77	2015	IC	MX7/240	H	35,492
77	2014	IC	MX7/240	H	52,073
77	2013	IC	MX7/220	H	66,187
77	2012	IC	MXDT/215	H	91,802
77	2011	IC	MXDT/215	H	86,727
77	2010	IC	MXDT/210	H	113,326
77	2009	IC	MX7/215	H	138,000
77	2008	IC	VT365/230	H	129,575
77	2007	IC	VT365/215	H	151,399
77	2007	Frtl	Mercedes	H	151,285
77	2004	TH	Cat3126/220	H	143,243
77	2003	Frtl	Cum. 5.9	H	162,602
77	1999	Intl	DT466	H	219,410
77/71	2014	IC	MXDT/215	H	43,892
Transit Buses					
65	2003	TH	Cum. 5.9	H	200,857
77	2009	BB	ISB/220	H	106,431
83	2010	IC	DT466/210	H	125,123
83	2003	TH	Cat3126/220	H	169,216
10 - 64 Passenger Buses					
9	2002	Chev	5.7 V8 350	H	86,171
14	2013	Chev	Chev	H	17,491
22	2002	Chev	5.7 V8 350	H	165,381
59	2011	IC	MX7/215	H	96,392
59	2011	IC	MX7/215	H	93,553
59	1996	Int	DT466/190	H	232,251
Special Needs & Lift Buses					
12+2	2002	Chevy	Diesel	H	32,243
18+	2009	Chev	6.0L	H	163,691
23+2	2013	IC	MX7/220	H	65,865
23+3	2008	Frtl	Mercedes	H	116,521
26+2	2008	IC	VT365	H	167,754
26+3	2012	IC	MX7/220	H	43,692
28+2	2007	TH	Merc/190	H	136,091
29+2	2009	IC	MX7/215	H	98,593
35+1	2009	IC	MX7/215	H	98,739
41+3	2013	IC	MX7/240	H	70,193
42+5	2011	IC	MXDT/245	A	144,162
65+1	2015	IC	MXDT/215	H	32,576

* Information deemed reliable but not guaranteed

CAN'T MAKE IT TO US? WE'LL COME TO YOU! MOBILE SERVICE AVAILABLE

Hoglund Bus Company offers Mobile Service throughout MN. Contact **Tom Paulson** for details & scheduling.



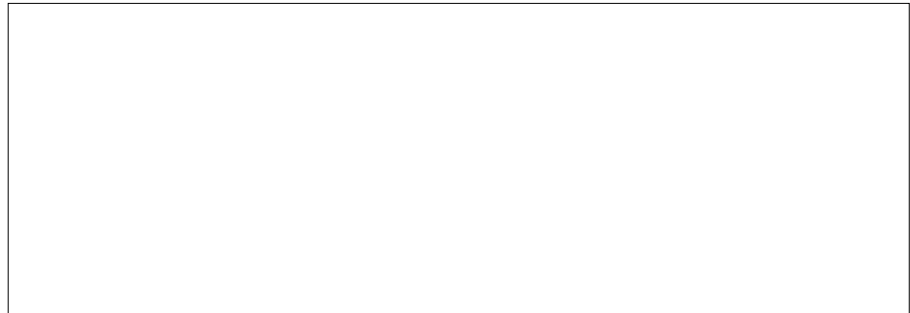
Tom Paulson
D: 763.271.2962
E: mobileadvisor@hoglundbus.com

Service Special:
50% OFF
DOT INSPECTIONS



PO Box 249
116 E Oakwood Drive
Monticello, MN 55362

Return Service Requested



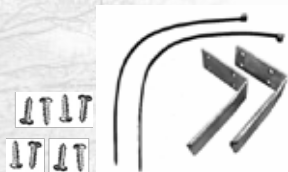
WINTER IS APPROACHING! ARE YOU READY?

Step Heater Hose Support Brackets for Thomas C-2

Supports the step heater hoses to prevent step heater core failure. Kit includes: 2 stainless steel supports, 8 self-tapping screws, and 2 zip-ties.

PART # 13/4X7

\$32.³¹ each



Lower Body Repair Panel (Galvannealed Steel)

PART #: 96X20

\$119.⁹⁵ each



96" L x 20" W with a 1" 90° lip

E-Guardian HYDRONIC M-II KITS (Carb Approved)

Boxed M-II 12 KW Heater 12 V Kit 42,000 BTU

p/n: 252824721202

\$2,569.³⁰ each



E-Guardian HYDRONIC D5 KITS (Carb Approved)

Boxed D5 E-Guardian 12V Kit, 17,100 BTU

p/n: 252823250507

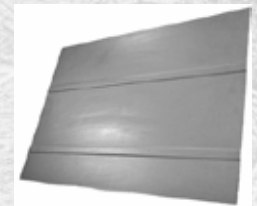
\$1,499.⁹³ each

3 Window Ribbed Side-Panel

84 1/2" x 16"

PART #: 423111003HOG

\$249.⁹⁶ each



Frost Scraper/Snow Brush

30" extends to 48"

\$8.⁹⁹ each



Wiper Shakers

Keeps wiper blades clear of snow and ice.

Part Number: SKR002

\$69.⁹⁹ each

Stretch your parts dollars with these special offers!

800.866.3104