



HOGLUND BUS COMPANY
Your Fleet Solutions Partner

INSIDE THIS ISSUE:

- New & Used Inventory
- Parts Specials
- Service Information
- Service Special

School Bus Sales Team

Marc Steele (Northern IA)

C: 641.512.3854

E: marcsteele@hoglundbus.com

Brian Glenney (Used Inventory Manager)

C: 641.751.4365

E: brianglenney@hoglundbus.com

Danny Thede (Southern IA)

C: 641.750.6428

E: danny.thede@hoglundbus.com

Parts Sales

Al Lucas

C: 641.750.8332

E: al.lucas@hoglundbus.com

DIRECT LINES:

Sales: 800.866.3105

Parts: 800.866.3104

Service: 877.752.4733

Tech Line: 763.271.2982

Warranty: 763.271.2978



www.hoglundbus.com

DECEMBER 2017

— **School Bus Flyer** —



Beginning January 2018, Hoglund Bus Co. will be going digital. We will be emailing our School Bus Flyer monthly and printing quarterly. If you have not signed up for our e-newsletter yet, email Melissa at marketing@hoglundbus.com to be added. We will still have the same informative content plus more industry news.

TRADE SHOWS

Save the Dates (2018)

- NSBA - 4/7 - 4/8, San Antonio, TX
- IPTA - 7/16 - 7/18

USED BUS SPOTLIGHT



File: 22005Al Odometer: 38,397
 Year: 2013 Engine: MX7/220
 Make: IC-CE Fuel: Diesel
 Pass: 65 Brake: Hydraulic

\$41,000.⁰⁰

OnCommand™ Connection is the industry's first and only open architecture remote diagnostic system for fleets of all makes and models of vehicles. Use OnCommand™ Connection to proactively identify potential problems, improve vehicle uptime, control maintenance and lower repair costs.

Features & Benefits



Reduce en-route events by proactively scheduling maintenance and repair



Map tools that plot truck locations, nearest dealers, hotels and local towing providers



Generate real-time comprehensive vehicle health reports



Understand fault codes quickly and easily with descriptions in plain English



Gain more insight with fault code action plans that provide severity information & recommend solutions



We will be closed
Monday, December 25th
and Monday January 1st

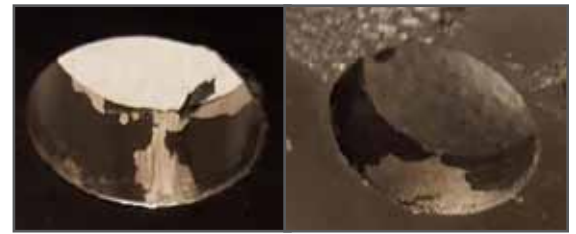
*From our family to yours, we
 wish you Happy Holidays
 and Happy New Year*

IC Bus Service Brake Switch Inspection

Source: iKNow article IK 0400155

Applies To: 2017 IC Bus with Hydraulic Brakes**Customer Concerns:** Brake lights not functioning or parking brake not releasing.**Diagnostic Steps:** To prevent unexpected movement of the vehicle and possible serious personal injury or death, park the vehicle on a flat, level surface, set the parking brake, turn the engine off and chock the wheels to prevent vehicle from moving in both directions.

1. Procedure can be performed with pedal assembly installed. **NOTE:** Make certain brake pedal is supported during reaming process.
2. Inspect brake switch clevis pin hole for debris/burrs/paint. See images below:



3. Using a reaming tool, remove any paint, burrs, or debris from clevis pin hole. Target Hole Diameter is 14.0-14.1 mm
4. Insert clevis pin into brake pedal assembly and ensure the clevis pin rotates freely in clevis pin hole. If pin does not rotate freely, more filing may be needed.
5. Inspect clevis pin for damage, if damaged then replace with new pin. If no damage is found on pin, reinstall brake pedal assembly into vehicle.
6. Verify repairs by rechecking for customer complaint.

EZ-Tech Navistar Launcher – Software Sunset / Launch of HeRo (Health Report) Software

Source: iKNow article IK 2700113

Navistar is proud to release HeRo (Health Report) Software which covers all International®, IC Bus™ and All Makes vehicles. Effective December 4, 2017, Navistar will be discontinuing the distribution and support of the Navistar EZ-Tech Launcher Health Report software. HeRo is the direct replacement for the Navistar EZ-Tech Launcher Health Report software.

Navistar is committed to working with you to make your transition a positive experience. As such, the following information highlights the various options that are available to you in this program.

OVERVIEW

With its advanced capabilities, HeRo (Health Report software) collects vehicle information, Diagnostic Troubleshooting Codes (DTCs) and other vital data points from the vehicle communication network. This network is made up of modules like the J1939 Modules, Engine Control Module, Aftertreatment Control Module, Body Control Module, Brake Control Module and the Transmission Control Module.

HeRo collects all this data and compiles it into a vehicle health report, which can be displayed from within the application.

In addition, HeRo also posts these health reports to OnCommand Connection* and the Navistar Service Portal, which add additional information such as open campaigns on the vehicle and fault code action plans.

* OnCommand Connection access included with the purchase of HeRo.

** Navistar Service Portal sold separately for customers.

DEALER AND ONCOMMAND™ EZ-TECH®

Dealers with EZ-Tech® computers (and customers with OnCommand™ EZ-Techs) will continue to receive support (5 years from date the EZ-Tech is shipped to the dealer / customer) and will automatically transition into the new software.

NOTE: Download the HeRo installation package from the EZ-Tech® download center on the Service Portal.

PURCHASING HeRo SOFTWARE

Please visit the Software section of the Navistar Tools Catalog. HeRo will be distributed with a perpetual license (no annual renewal fee)



TECH SUPPORT: We invite you to contact our tech help-line with any technical or training questions.

Doug Yager:

D: 763.271.2982 • C: 763.350.2597

E: service@hoglundbus.com

WARRANTY SUPPORT: We invite you to contact our warranty dept. with any questions you might have.

Eric Farber:

D: 763.271.22978 E: eric.farber@hoglundbus.com

NEW BUS INVENTORY

PASS	YEAR	SPEC	MAKE	ENGINE	BRK
44+	2017	1705	IC - CE	ISB/240	A
65	2017	1706	IC - CE	ISB/240	A
65	2018	1802	IC - CE	Propane/270	A
65	2018	1805	IC - CE	ISB/240	A
77	2016	1615	IC - CE	MXDT/230	A
77	2017	1733	IC - CE	ISB/240	A
77	2018	1801	IC - CE	Propane/270	A
77	2018	1804	IC - CE	ISB/240	A

*Note: To view full list of inventory, visit www.hoglundbus.com



Please Welcome Aaron Betts to the Hoglund Bus Team!

Aaron is our Mobile Service Tech in IA. He comes to us from Nelson Fabrication in Marshalltown and has experience in welding, heavy trucks, equipment operations and is a fire fighter. When

Aaron is not on the road fixing your fleet he is spending time with his fiancée, Kate and puppy dog.

**SO, WHEN YOU CAN'T MAKE IT TO US.....
AARON WILL COME TO YOU!**

To schedule Mobile Service, please contact Greg Waters.



Greg Waters

T: 641.351.7646

E: greg.waters@hoglundbus.com

Service Special:

50% OFF

DOT INSPECTIONS



2017 COURSE CATALOG

Hoglund Bus Company

- OnCommand Connection
- PSI Propane Training
- MaxxForce 7, DT, 9, 10
- CE Bus Program (Brakes, Electrical)

IC Bus

- 2007 Emissions Fundamentals
- OnCommand Service & Parts Information
- ServiceMaxx Introduction and Usage

Navistar

- OnCommand Connection - Paid subscription available to purchase through Hoglund Bus, contact mnpartscoord@hoglundbus.com

Meritor

- Automatic Slack Adjuster
- Foundation Brake

USED BUS INVENTORY

PASS	YEAR	MAKE	ENGINE	BRK	ODO
Large Conventional Buses 65 to 77 Passenger					
65	2015	IC	MXDT/230	A	42,148
65	2015	IC	MXDT/230	A	23,604
65	2014	IC	MXDT/230	H	46,382
65	2014	IC	MXDT/260	A	39,046
65	2013	IC	MX7/220	A	40,483
65	2011	IC	MX7/215	A	84,229
65	2010	IC	MX7/215	A	78,219
65	2008	Vision	Cummins 6.7L	H	101,712
65	2007	IC	DT466/220	A	145,643
65	2003	TH	Cum. 5.9	A	181,761
65	2002	Intl	T444/195	H	181,176
65	2002	TH	Cum. 5.9	A	180,545
65	2001	Intl	DT466/195	H	209,012
65	2000	TH	Cum. 5.9	A	172,078
65	1999	Frtl	Cum. 5.9	A	175,995
65	1996	Int	T444/190	H	168,818
65	1995	Intl	T444/NF	H	209k
71	2014	IC	MXDT/245	A	47,434
71	2008	Frtl	CatC7/210	A	109,247
72	2004	IC	T444/210	A	120,503
77	2015	IC	MXDT/230	A	31,027
77	2008	Frtl	Merc/210	A	95,059
Transit Buses					
78	2007	Intl	DT466/245	A	98,661
83	2004	TH	Cum. 5.9	A	21,414+
84	2000	Frtl	Cat3126	A	172k
84	1995	TH	Cummins 8.3L	A	237,041
10 - 64 Passenger Buses					
22	2004	Chev	6.0L	H	148,206
33+	2005	IC	DT466/210	A	112,209
53	2012	IC	MX7/220	H	42,234
59	1994	Chev	6.0L	H	140,795
59	1993	GMC	Gas	H	156,348
Special Needs & Lift Buses					
8+3	2004	Chev	Gas	H	120,928
30+	2005	IC	VT365/200	H	142,727
42+1	2008	Frtl	CatC7/220	A	104,196
44+1	2015	IC	ISB/250	A	41,476
44+	2007	IC	DT466/220	A	104,957

* Information deemed reliable but not guaranteed

Return Service Requested



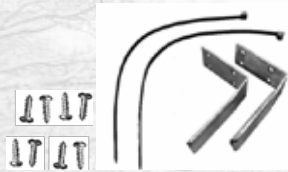
WINTER IS APPROACHING! ARE YOU READY?

Step Heater Hose Support Brackets for Thomas C-2

Supports the step heater hoses to prevent step heater core failure. Kit includes: 2 stainless steel supports, 8 self-tapping screws, and 2 zip-ties.

PART # 13/4X7

\$32.³¹ each



Lower Body Repair Panel (Galvannealed Steel)

PART #: 96X20

\$119.⁹⁵ each



96" L x 20" W with a 1" 90° lip

E-Guardian HYDRONIC M-II KITS (Carb Approved)

Boxed M-II 12 KW Heater 12 V Kit 42,000 BTU

p/n: 252824721202

\$2,569.³⁰ each

E-Guardian HYDRONIC D5 KITS (Carb Approved)

Boxed D5 E-Guardian 12V Kit, 17,100 BTU

p/n: 252823250507

\$1,499.⁹³ each

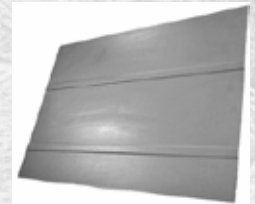


3 Window Ribbed Side-Panel

84 1/2" x 16"

PART #: 423111003HOG

\$249.⁹⁶ each



Frost Scraper/Snow Brush

30" extends to 48"

\$8.⁹⁹ each



Wiper Shakers

Keeps wiper blades clear of snow and ice.

Part Number: SKR002

\$69.⁹⁹ each

Stretch your parts dollars with
 these special offers!

800.866.3104